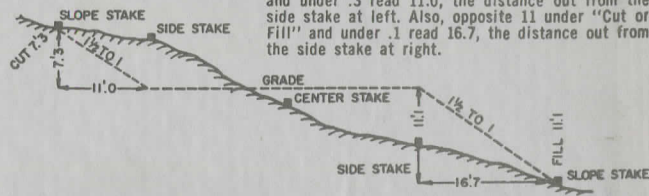


**GEAUGA COUNTY ENGINEER'S
FIELD BOOK
#326**

DISTANCES FROM SIDE STAKES FOR CROSS-SECTIONING

Roadway of any Width. Side Slopes 1 1/2 to 1.

In the figure below: opposite 7 under "Cut or Fill" and under .3 read 11.0, the distance out from the side stake at left. Also, opposite 11 under "Cut or Fill" and under .1 read 16.7, the distance out from the side stake at right.



Cut or Fill	Distance out from Side or Shoulder Stake										Cut or Fill
	0	.1	.2	.3	.4	.5	.6	.7	.8	.9	
0	0.0	0.2	0.3	0.5	0.6	0.8	0.9	1.1	1.2	1.4	0
1	1.5	1.7	1.8	2.0	2.1	2.3	2.4	2.6	2.7	2.9	1
2	3.0	3.2	3.3	3.5	3.6	3.8	3.9	4.1	4.2	4.4	2
3	4.5	4.7	4.8	5.0	5.1	5.3	5.4	5.6	5.7	5.9	3
4	6.0	6.2	6.3	6.5	6.6	6.8	6.9	7.1	7.2	7.4	4
5	7.5	7.7	7.8	8.0	8.1	8.3	8.4	8.6	8.7	8.9	5
6	9.0	9.2	9.3	9.5	9.6	9.8	9.9	10.1	10.2	10.4	6
7	10.5	10.7	10.8	11.0	11.1	11.3	11.4	11.6	11.7	11.9	7
8	12.0	12.2	12.3	12.5	12.6	12.8	12.9	13.1	13.2	13.4	8
9	13.5	13.7	13.8	14.0	14.1	14.3	14.4	14.6	14.7	14.9	9
10	15.0	15.2	15.3	15.5	15.6	15.8	15.9	16.1	16.2	16.4	10
11	16.5	16.7	16.8	17.0	17.1	17.3	17.4	17.6	17.7	17.9	11
12	18.0	18.2	18.3	18.5	18.6	18.8	18.9	19.1	19.2	19.4	12
13	19.5	19.7	19.8	20.0	20.1	20.3	20.4	20.6	20.7	20.9	13
14	21.0	21.2	21.3	21.5	21.6	21.8	21.9	22.1	22.2	22.4	14
15	22.5	22.7	22.8	23.0	23.1	23.3	23.4	23.6	23.7	23.9	15
16	24.0	24.2	24.3	24.5	24.6	24.8	24.9	25.1	25.2	25.4	16
17	25.5	25.7	25.8	26.0	26.1	26.3	26.4	26.6	26.7	26.9	17
18	27.0	27.2	27.3	27.5	27.6	27.8	27.9	28.1	28.2	28.4	18
19	28.5	28.7	28.8	29.0	29.1	29.3	29.4	29.6	29.7	29.9	19
20	30.0	30.2	30.3	30.5	30.6	30.8	30.9	31.1	31.2	31.4	20
21	31.5	31.7	31.8	32.0	32.1	32.3	32.4	32.6	32.7	32.9	21
22	33.0	33.2	33.3	33.5	33.6	33.8	33.9	34.1	34.2	34.4	22
23	34.5	34.7	34.8	35.0	35.1	35.3	35.4	35.6	35.7	35.9	23
24	36.0	36.2	36.3	36.5	36.6	36.8	36.9	37.1	37.2	37.4	24
25	37.5	37.7	37.8	38.0	38.1	38.3	38.4	38.6	38.7	38.9	25
26	39.0	39.2	39.3	39.5	39.6	39.8	39.9	40.1	40.2	40.4	26
27	40.5	40.7	40.8	41.0	41.1	41.3	41.4	41.6	41.7	41.9	27
28	42.0	42.2	42.3	42.5	42.6	42.8	42.9	43.1	43.2	43.4	28
29	43.5	43.7	43.8	44.0	44.1	44.3	44.4	44.6	44.7	44.9	29
30	45.0	45.2	45.3	45.5	45.6	45.8	45.9	46.1	46.2	46.4	30
31	46.5	46.7	46.8	47.0	47.1	47.3	47.4	47.6	47.7	47.9	31
32	48.0	48.2	48.3	48.5	48.6	48.8	48.9	49.1	49.2	49.4	32
33	49.5	49.7	49.8	50.0	50.1	50.3	50.4	50.6	50.7	50.9	33
34	51.0	51.2	51.3	51.5	51.6	51.8	51.9	52.1	52.2	52.4	34
35	52.5	52.7	52.8	53.0	53.1	53.3	53.4	53.6	53.7	53.9	35
36	54.0	54.2	54.3	54.5	54.6	54.8	54.9	55.1	55.2	55.4	36
37	55.5	55.7	55.8	56.0	56.1	56.3	56.4	56.6	56.7	56.9	37
38	57.0	57.2	57.3	57.5	57.6	57.8	57.9	58.1	58.2	58.4	38
39	58.5	58.7	58.8	59.0	59.1	59.3	59.4	59.6	59.7	59.9	39
40	60.0	60.2	60.3	60.5	60.6	60.8	60.9	61.1	61.2	61.4	40

#98 INDEX
Cedar Rd - Sec. D 1972

#105
HEATH Rd.
11
#98 Cedar Rd
11

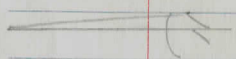
Align 1
Topo 2-5
X-sec 8-10
TOPO (south of Cedar) 11-12
X-SEC (" " " ") 13
TOPO (E. of Heath) 14-15
X-sec (" " " ") 16



The paper in this book is made of 100% high grade rag stock with a WATER RESISTING surface sizing.

Cedar Road

①



Heath Road

17452.07

Iron
in rock

17'

90°
SPK

1751.06 F.R.T.

1750.82 P.M.

F Base line
1752.07' in 9 carried

0+0 Man. Bay



17'

90°
SPK

SPK

H. Patterson
D. G. Vessey
D. Wange

Cedar wood
Topo
25° (Brv)
N. Bas. Line S.

1+0	6" cherry	8'
+93	10" Maple	52'
+92	10" Maple	48'
+92	5" Maple	28'
+90	5" Apple	25'
+86	5" Maple	28'
+84	5" Iron	14'
+79	5" Iron wood	25'
+76	2-5" Iron wood	21'
+71	8" Iron wood	8'
+70	8" Iron wood	14'
+68		11 0 4" cherry
+65	4-5" Iron wood	18'
+64		1' 6" } cherry
+63		1' 4" }
+62	3" stump	49'
+61	5" Road Tree	49'
+60	4" Iron wood	16'
+56	6" Dead Tree	39'
+56	5" Ash	16'
+45		9' 58" 10" x 99" CMP culat.
+39	Bag. Brush	50' 26'
+29.5	Put edge	
+03		
0+0	4 Sperry Rd. Mon Bay	17'

Bas. Line
(2)

+12	Double 10" cherry	12'
3+0	Rd width	4' 4"
+88	6" Ash	19'
+87	15" cherry	8'
+66	10" cherry	25'
+60		11" 2-6" cherries
+38	26" cherry	7'
+26		10' 4" cherry
+17	10" cherry	4'
+13	Double 10" cherry	26'
+09	8" Maple	46'
2+0	Rd width	2' 6"
+91	12" Pine	31' 13" Double 10" cherry
+78		13' Maple clump
+77	3-12" cherry	44'
+63	3-8" S	44'
+56	2" cherry	10'
+52		13' 6" cherry
+45	8" Cherry	29'
+44	6" Maple	22'
+18	8" Pine	45'
+18	6" Cherry	36'
+18	6" S	13'
+01	5" Apple	10'
1+0		5' 10' edge Rd.

Base
Line

	N.	S.
740	Rd width	9' 9"
+96	12" Ash	24'
+88	10" Maple	42'
+58	12" Maple	24'
+57	15" Dead Maple	22'
+43	36" Elm	29'
+29	2-6" Red Elm	18'
+04	Down. 10" Elm	14'
640	Rd width	9' 9"
+98	12" Cherry	14'
+58	10" Elm	38'
+41	10" }	38'
+31	6" }	38'
+22	8" Apple	38'
540	Rd width	9' 9"
+78	6" }	44'
+78	6" Apple	32'
+56	12" Cherry	26'
+46	6" Apple	17'
+14	8" Apple	27'
440	Rd width	8' 0"
+99		7' 4-8" Maple
+55	8" cherry	21'
+39	8" Elm	16'
3434		7' 6-8" Maple

Base
Line

(3)

	N.	S.
+50	6 Maple	26'
+46	6" cherry	25'
+45	6" cherry	16'
+21	6" Sassafras	28'
+19	6" cherry	47'
+07	12" Maple	32'
740	Rd width	9' 9"
+63	15" cherry	21'
+58	10" Tulip	43'
+58	20" Elm	21'
+48	15" Maple	21'
+46	15" cherry	22'
+13	10" Maple	36'
+12	12" Maple	25'
+08	2-10" cherry	22'
840	Rd. width	9' 9"
+92	2-6" Ironwood	34'
+87	10+13" cherry	21'
+68	17" Ash	26'
+49	15" cherry	21'
+44	2-6" Ironwood	28'
+38	8" Maple	37'
+16	10" Maple	31'
+11	6" Hickory	28'
7406	15" cherry	21'

	N	Best Line	S
+71	2-10" Maple	38	
+56	6" Maple	24	
+52	12" Maple	36	
+49	15" cherry	19	
+43	15" Maple	18	
+37	8" Maple	29	
+31	8" Tulip	25	
+16	15" Tulip	19	
+12	6" Maple	20	
+0	Rd. width	8' 0"	
11+00	15" Maple	41	
+96	12" Cypress	39	
+84	25" Maple	18	
+74	8+10" Maple	40	
+69	18" Maple	24	
+62	12" Maple	18	
+15	8" Ash	20	
+10	Trimp 6" Apple	32	
10+0	Rd. width	8' 0"	
+85	8" Apple	33	
+86	8-10" Ash clump	14	
+75	8" Hickory	24	
+73	6" cherry	21	
+56	6" cherry	25	
9+53	2-6" cherry	14	

	N	Best Line	S
+88	20" cherry	19	
+85	12" Maple	23	
+56	15" Stump	17	
+25	8" Maple	25	
+23	30" Dead Trnc	21	
+10	10" }	23	
+09	6" }	23	
+06	6" Ironwood	23	
+0		9' 1"	
13+0	12" Ironwood	23	
+94	6" cherry	16	
+51	15" Maple	41	
+57	24" Maple	18	
+51	30" Stump	13	
+37	10" Maple	43	
+32	6" Maple	23	
+24	2-6" Maple	19	
+16	10" Maple	26	
+13	6" Tulip	20	
+03	6" Ash	22	
+02	8" Maple	31	
12+0	Rd. width	9' 0"	
+94	10" Tulip	24	
+86	10" Tulip	47	
+84	18" Maple	22	

	N.	Base Line	S.
+40	24" Maple	45'	
+40	20" Tulip	13'	
+13	20" Beech	30'	
+07	20" Cherry	41'	
16+0	Rd. width	3' 12"	
+99	12" Maple	19'	
+98	20" Maple	11'	
+85	20" Maple	17'	
+61	6" cherry	12'	
+55	15" Maple	42'	
+54	6" cherry	16'	
+42	20" Maple	16'	
+26	6" Maple	44'	
+20	18" Maple	46'	
+13	12" Tulip	18'	
15+0	Rd. width	6' 3"	
+99	20" Dead Tree	18'	
+87	20" Maple	20'	
+71	18" Maple	41'	
+64	12" cherry	22'	
+57	8" Maple	46'	
+43	18" Maple	21'	
+34	20" Maple	47'	
+22	15" Maple	18'	
+05	15" Maple	19'	
14+0	Rd width	9' 0"	

	N	Base Line	S
+51	* Health Rd		
+45	CSE	17' 12"	12" with tile runs
+30	cut brush	47' 6"	
+33	12" Maple	22'	
+31	Dead Man	17'	
+26	17" Maple	9'	
+26	20" Maple	2'	
+24	Tel Pole	15'	
+02	20" Maple	17'	
17+0	Rd. width	10' 4 25"	
+95	12" Dead Tree	14'	
+82	13" stump	7'	
+78	15" Maple	10'	
+70	12" Maple	19'	
+62	10" Maple	36'	
+62	15" Maple	16'	
+49	8" cherry	12'	

H. Pottson
D. Grassl
D. Wings
D. Mullet

Cedar Roo
Bench mark
Level 13
11/27/20 33° cloudy
B.S. F.S.
+ H2 - Elev.

	B.S.	H2	F.S.	Elev.	
BM #156	4.99	1086.25		1081.26	G.C. Mon
T.P. 1	0.22	1075.81	10.66	1075.59	Curb
T.P. 2	1.96	1071.20	6.57	1069.24	Curb
B.M. 1	10.03	1070.73	10.55	1060.65	SPIKE
T.P. 3	6.47	1075.69	1.51	1069.22	Curb
T.P. 4	11.59	1086.28	1.00	1074.69	Curb
B.M. #156	12.70	1073.35	5.02	1081.26	
D.M. 1	12.70	1073.35		1060.65	
T.P. 1	18.68 9.68	1083.09	0.94	1072.41	
T.P. 2	11.01	1092.87	1.23	1081.86	
B.M. 2	2.95	1095.27	0.55	1092.32	Spike
T.P. 3	11.90	1104.96	2.27	1093.00	
T.P. 4	12.15	1116.58	0.47	1104.43	
T.P. 5	9.44	1123.81	2.21	1114.37	14
T.P. 6	11.91	1132.96	2.76	1121.05	15
T.P. 7	11.93	1143.32	1.57	1131.39	
T.P. 8	12.34	1154.12	1.56	1141.76	(1141.47)
T.P. 9	8.40	1160.01	2.49	1151.61	
B.M. 3	2.52 5.57		3.57 5.12	1154.59	Spike
	0.04	1157.48	2.57	1157.44	(1156.60)
T.P. 10	1.56	1150.05	8.99	1148.49	
T.P. 11	0.62	1142.09	8.58	1141.47	(8)
T.P. 12	0.35	1132.14	10.00	1132.09	
T.P. 13	0.74	1122.50	10.68	1121.76	
T.P. 14	1.08	1116.17	7.41	1115.09	

8.5' W. of C.E.I. #393538, 32' SE Forked Cherry, 24' W. of Sperry

East side C.E.I. No. 190981-X opp. Cedar Sperry rd. on West side of Sperry

(1060.65) OK

(1092.32) OK
North side dbl. 12" maple 60' right sta. 8+30

North side of 36" maple 95' South of Cedar Rd. 25' East of Heath Rd. Rd.

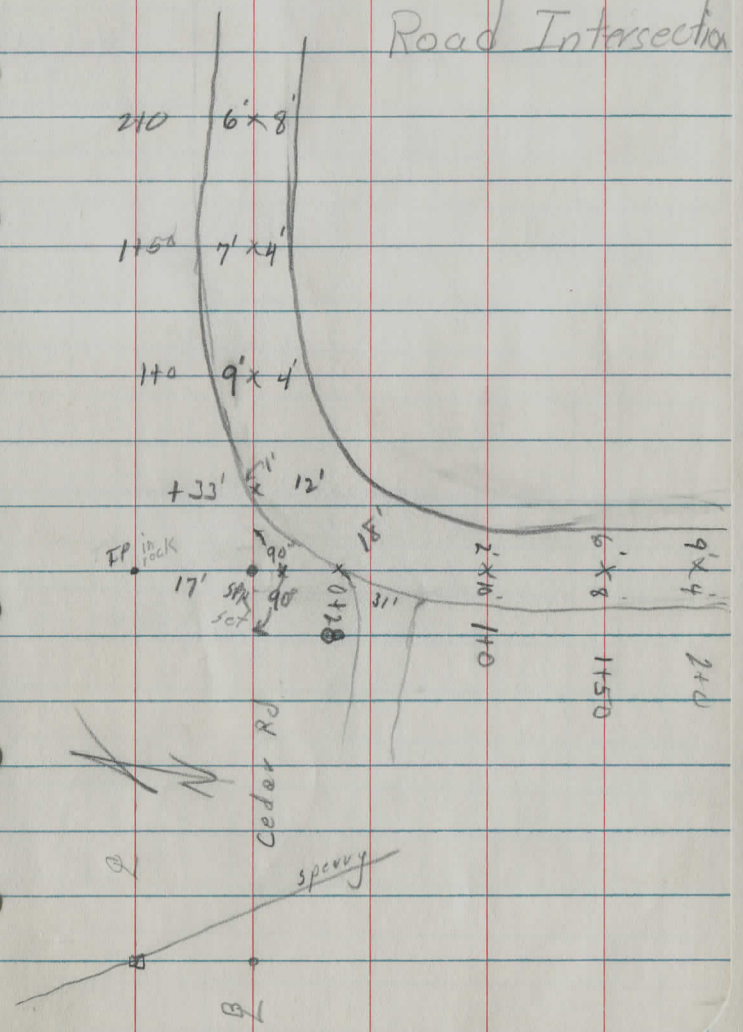
H. Patterson
 O. Grossel
 D. Mullet
 O. Mullet

Cedar Rd,
 Bench mark
 11/25/72 - OVERCAST
 11/6/77
 F.S 330
 + S, H, I, ELEV,

T.P. 14	0.91	1106.06	11.02	1105.15	④
T.P. 15	1.77	1095.61	12.22	1093.84	③
T.P. 16	0.24	1093.71	2.45	1093.16	B.M.
T.P. 17	1.22	1083.92	10.70	1082.70	
T.P. 18	0.65	1073.92	10.65	1073.27	
B.M.			12.44	1061.48	

Heath Road AND Cedar Road Intersection

(10)



H. Potterman Cedar Road
 D. Swanson
 D. W. ... X sec.
 D. Mallett 11/25/22

BM 1 6.74 1067.39 1060.65

0+13 2 Sperry Rd.

+46 Biditch sperry

+50

1+0

T.P. 7.49 1074.59 0.29 1067.10

+50

2+0

T.P. 12.41 1083.06 3.94 1070.65

+50

3+0

+50

TP 5.39 1093.03 5.42 1077.64 3+0 4+0

4+0

5+0

6+0

T.P. 12.72 1092.09 3.66 1079.37

Base
Line

(8)

65.59 61.29 ~~60.19~~ 1060.39 61.49 69.89
 150 6.10 7.20 7.00 5.70 2.50
 200 100 22 100 200

11/2 week 1158.39 11/15" Apr 58.09 58.29
 55.13 12.70 9.00 9.30 9.10 9.10
 20 8 57

58.09 50.93 1064.03 80.89
 7.30 10.40 7.80 6.50
 47 40 13

62.73 62.79 60.49 66.89 1062.53 61.99
 5.00 6.00 0.00 4.50 4.50 5.40
 50 39 29 11 13

69.13 69.19 65.49 1065.93 69.79 67.89
 5.40 5.40 7.10 9.10 7.30 6.10
 47 8 2 10 16

72.39 72.89 68.19 1067.03 67.19 69.39
 7.10 7.10 6.40 6.20 6.80 7.75
 47 10 4 7 13

76.66 75.96 71.16 1070.93 71.06 73.06
 6.40 7.10 11.20 12.10 12.00 10.00
 47 11 5 7 13

75.46 79.96 74.16 1074.46 74.16 78.06
 7.40 11.60 8.3 8.60 8.50 5.00
 47 11 6 6 13

79.46 79.06 77.16 1077.46 77.26 79.06
 8.60 6.00 5.20 5.60 5.80 4.00
 47 7 6 6 13

74.33 77.53 76.93 1071.04 77.53 78.13 78.43
 8.20 5.50 6.10 5.39 5.50 4.90 4.60
 47 13 12 5 7 13

75.53 72.33 78.33 1072.3 72.23 76.53
 7.50 4.70 4.20 4.80 5.20 6.50
 47 11 9 5 13

79.03 76.93 79.23 1073.23 78.03
 9.00 6.60 7.80 3.80 5.00 5.00
 47 21 7 13

1092.09

7+0

T.P. 10.63 1097.28 8.94 1083.15

BM^F 1.03 1093.40 1.41 1092.37

9+0

T.P. 9.30 1097.28 5.32 1088.05

9+0

10+0

T.P. 9.78 1105.34 1.82 1095.56

11+0

T.P. 11.20 1113.88 2.66 1102.68

12+0

13+0

+50

T.P. 10.44 1124.13 0.19 1113.69

14+0

+50

15+0

T.P. 11.31 1132.50 2.94 1121.19

+50

B260

Line

9

N.
 81.09 81.73 80.89 82.10 82.10 80.29 81.58
 11.00 10.30 11.20 11.10 11.50 10.50 10.50
 47 17 15 9 11 13

85.80 87.40 83.50 83.80 83.30 89.70 87.30
 7.60 6.60 9.90 7.60 10.50 8.70 6.10
 47 17 11 1 4 13

87.88 90.88 87.68 88.58 87.28 91.78
 9.50 6.50 7.70 7.20 10.10 5.60
 47 16 9 2 13

94.08 94.38 82.88 83.01 91.58 93.68 94.88
 3.30 3.00 4.40 4.31 3.40 3.70 2.50
 47 11 8 3 7 13

99.74 100.69 99.54 97.79 107.44 97.89 97.14 98.41 100.84
 5.60 7.70 5.80 7.60 7.40 7.40 8.20 6.90 4.50
 47 22 13 9 2 4 6 13

104.28 105.88 104.58 2.58 110.08 107.18 106.88
 7.60 8.00 9.30 11.30 11.80 9.70 7.00
 47 17 12 9 10 13

107.78 109.88 107.54 110.58 110.68 110.18
 6.10 4.00 9.30 6.30 7.20 3.70
 47 16 9 3 13

110.38 112.98 111.98 111.58 110.78 112.58 113.08
 3.50 6.80 2.40 2.30 3.10 1.30 0.80
 47 12 9 3 8 13

113.83 115.23 114.13 114.53 112.83 116.63 115.93
 10.30 8.90 10.00 9.60 10.7 7.50 8.20
 47 13 10 4 10 13

116.83 117.83 117.83 117.83 116.73 118.73 118.63
 9.30 6.20 6.30 7.40 5.40 5.50
 47 10 5 10 13

119.53 21.63 20.93 118.13 21.13 20.53 21.33 21.33
 4.60 2.50 3.20 3.0 3.00 3.80 2.80 2.70
 47 13 9 4 7 9 13

23.70 24.70 24.30 1124.20 24.70 24.40 25.20 25.10
 8.30 7.80 8.2 8.3 7.8 8.10 7.30 7.40
 47 10 9 6 8 11 13

1132.50

16+0
T.P. 11.44 1142.97 0.92 1131.53
+50
T.P. 12.01 1152.92 2.06 1140.91
17+0
T.P. 12.95 1164.41 1.46 1151.46
+50

18+00
+50

T.P. 9.59 1173.39 0.61 1163.80
19+50
20+00
T.P. 3.31 1166.56 10.14 1163.25
B.M. #3 9.93 1156.63

Base Line
N. S.
48.70
0.27
1.00
1.00
10

28.80	28.80	1128.70	23.00	28.70	23.70	30.50
3.20	2.60	3.8	3.50	3.80	2.80	2.0
47	2		10	13	12	20
36.27		1137.27	33.97	33.97	34.17	
6.70		5.60	9.00	9.00	8.80	
47			8	10	19	
45.52	47.28	1145.72	43.12	40.92		
7.40	5.20	7.20	9.80	12.00		
47	17		10	13		
50.11	53.91	59.51	1153.81	53.01	59.21	53.21
14.30	11.00	9.90	10.60	11.40	10.20	11.20
50	40	17		17	21	50
			1159.31			
			5.10			
			1163.81			
			0.60			
			1168.99			
			4.40			
			1172.99			
			1.10			

12.40
27
40.52

D. Grasse
D. W. 120

HEATH ROAD TOPO
(North + South)
1-23-73 (South of cedar)

	E	W
+0		
+0		Dead Man 21'
+2		CEI 9'
+3		OBT 28'
+8		12" MAPLE 27'
+16		18" OAK 27'
+28		12" VIT 9'
+50	ROAD WIDTH 14' 0'	
+57	10" OAK 29'	
+79	20" OAK 28'	
+85	30" ELM 27'	
+92		12" CMP 16'
+98	12" CMP 6' ^{X RD.} _{CULVERT}	
	36" MAPLE 26'	
+10	ROAD WIDTH 3' 9'	
+3		6" ASH 24'
+28	36" ELM 14'	
+38	24" CHERRY 25'	
+44	12" MAPLE 25'	
+49	12" MAPLE 27'	
+50	ROAD WIDTH 5' 8'	
+54	6" ASH 25'	
+66	36" HICKORY 24'	
+77	8" HICKORY 20'	CEI 11'
+85		DEAD MAN 22'

1-23-73 HEATH ROAD TOPO
(NORTH + SOUTH)

11

	EAST	BASE	WEST
+86			24" MAPLE 29'
+20	ROAD WIDTH	8' 5"	
+5			18" MAPLE 28'
+9	12" ASH 27'		
+27	30" DEAD ELM 25'		
+34			12" ASH 29'
+50	ROAD WIDTH	14' 0"	
+57			10" MAPLE 20'
+59			15" MAPLE 15'
+60			8" MAPLE 20'
+66			20" ASH 20'
+87			36" WALNUT 29'
+30	ROAD WIDTH	16' 0"	
+3			8" CHERRY 18'
+8			12" CHERRY 25'
+14			6" MAPLE 19'
+15			12" MAPLE 25'
+30			18" CHERRY 18'
+32			16" MAPLE 25'
+45			14" CHERRY 24'
+50	ROAD WIDTH	15' 0"	20" CHERRY 19'
+57			16" CHERRY 6'
+70			10" CHERRY 14'
+76			6" IRONWOOD 11'
+80			16" MAPLE 22'

D. GRASSEL
D. WENZEL

HEATH ROAD TO PO
1-23-73 (NORTH + SOUTH)

(12)

	EAST	☪	WEST
+84			8" MAPLE 20'
+91			16" ASH 28'
+93			8" MAPLE 20'
4+0	ROAD WIDTH 2'15'		6" ASH 11'
+R			6" IRONWOOD 20'
+8			8" MAPLE 8'
+17			22" ASH 23'
+45			20" CHERRY 28'
+50	ROAD WIDTH 1'15'		
+76			36" OAK 30'
+89			26" MAPLE 30'
+91			20" OAK 20'
5+0	ROAD WIDTH 1'14'		

D. WENZEL
D. GRASSEL
PROJSET - CEDAR BL

CROSS SECTION NOTES
HEATH ROAD (NORTH + SOUTH)
south of Cedar

STA.	B.S.	H.I.	F.S.	ELEV.
B.M.#3	2.13	1158.73	-	1156.60
0+0				
+50				
1+0				
+50				
2+0	10.58	1167.86	1.45	1157.28
2+50				
3+0				
+50				
4+0				
+50				
5+0	B.M.#3		11.27	1156.59

RIGHT OF WAY 60' JAN. 23-1973

EAST		±	WEST	
56.43 30 2.3	53.63 16 5.1	1159.73 4.0	54.08 11 4.7	51.83 15 6.9
58.73 30 2.0	56.93 20 18.6	52.78 17 6.0	53.03 18 5.7	1153.49 5.3
55.53 30 3.2	53.23 14 5.5	51.23 7.5	51.73 9 7.0	(C.M.P.) 8.4
57.93 30 0.8	55.43 17 3.3	52.73 19 6.0	59.23 8 3.5	1155.73 5.0
58.73 30 2.0	56.93 14 2.0	57.03 12 1.7	59.23 12 6.4	1157.93 6.4
63.26 30 4.6	59.66 20 8.7	60.16 15 7.7	60.56 13 7.3	1160.36 7.5
63.26 30 4.6	61.36 19 6.5	61.86 15 6.0	61.46 12 6.5	1161.36 6.5
65.06 30 2.8	64.36 20 3.5	62.76 17 5.1	63.06 16 4.8	1162.56 5.3
65.26 30 2.6	64.56 20 3.3	63.56 19 4.3	63.96 17 3.9	1163.56 4.3
65.66 30 2.2	65.36 18 2.5	64.16 19 3.7	64.36 17 2.5	1163.76 4.1
66.06 30 2.8	65.66 24 2.2	64.76 19 2.1	65.06 17 2.8	1164.46 3.4
				1165.56 8 4.3
				60.16 30 2.2
				60.36 30 10.7
				58.76 30 9.1
				60.16 30 7.4
				60.36 30 7.5
				60.16 30 6.4
				60.36 30 6.4
				61.46 30 6.3

1-24-73

Topo Cedar Rd.
(east of Heath)

	NORTH	♀	SOUTH
0+6	10" TULIP 13'		
+33	DBL. ELM 40" 8'		
+50	ROAD WIDTH		9' 2" R.W.
+51	30" OAK 2'		
+52	BEG INN BRUSH		→ 5 FEET AND OUT
+76	8" CHERRY 29'		
+83	10" DEAD TREE 16'		
+95	8" ELM 13'		
+98	8" BEECH 6'		
"	10" CHERRY 25'		
1+0	10" MAPLE 20'		ROAD WIDTH 2' 18"
+17	8" MAPLE 19'		
+21	8" MAPLE 19'		
+18			CEI 30'
+27	12" CHERRY 15'		
+34	DEAD STUMP 1'		
+41	8" MAPLE 30'		
+46	6" MAPLE 25'		
+50			ROAD WIDTH 5' 13"
+51	32" MAPLE 1'		
+61	8" TULIP 22'		
+68			30" ELM 23'
+74	8" MAPLE 25'		
+77	10" CHERRY 20'		

GRASSEL
WENZEL

PROJECT CEDAR RD. 14

	NORTH	♀	SOUTH
+95	6" MAPLE 12'		
+97	8" CHERRY 25'		
+98	DEAD STUMPS		
2+0			ROAD WIDTH 4' + 12"
+4	CLUMP 4-8" MAPLES 11'		
+15	4-8" MAPLES 17'		
+22	6" CHERRY 30'		
+25	15" " 30'		
+50			ROAD WIDTH 3' + 12"
+64	DBL. 8" CHERRY 9'		
+76	6" STUMP 11'		
+83	8" " 10'		
+92	6" ELM 15'		CEI 26'
+83	DBL MAPLE 6" 20'		
+85	8" CHERRY 30'		
+98	6" CHERRY 18'		
3+0			ROAD WIDTH 21' + 13"
+7	8" STUMP 12'		
+10	8" ELM 17'		
+11	STUMP 11'		
+21	20" MAPLE 28'		
+22	STUMP 15'		
+28	4 STUMPS 12'		
+40	10" HICKORY 25'		
+50			ROAD WIDTH 2' + 12"

1-24-73

NORTH E SOUTH

+51	DEAD TREE 28'	
+60	12" MAPLE 16'	
+68	10" STUMP 15'	
+81	DEAD APPLE 26'	
+82	8" ELM 15'	
+84	10" MAPLE 30'	
+93	6" ELM 23'	
4+0		ROAD WIDTH 11'
+8	8" TULIP 16'	
+16	5 STUMPS 10'	
+20	8" ELM 30'	
+21	6" " 22'	
+26	2-8" ELMS 29'	
+28	12" CHERRY 15'	
+36	8" CHERRY 28'	
+45	10" ELM 24'	
+49	12" CHERRY 23'	
+50	ROAD WIDTH 2'	12'
+51	10" ELM 30'	
+66	DEAD ELM 24'	CEJ. 22'
+78	14" CHERRY 27'	
+85	12" CHERRY 21'	
+96	10" TULIP 28'	
+99	END BRUSH	

NORTH

E

SOUTH

5+0 ROAD WIDTH 2' 9'

O.L. 20

O.L. 23

O.L. 23

O.L. 26

Set July 5, 1963
T.R.R.

Root Nail S.E.
Rt. 18" Maple

Spk. S. side
turn 12" Cherry

Pipe

28.50

2436.0

±

Pipe

Pekin Rd 2429.95

S. 86-19-20 E

Bass Lake Rd

59.0

79.5

Pipe

Root Nail NE
Rt. 24" Elm

Spk. NE
Rt. 16" Ash

2341

52.31

O.L. 19

O.L. 24

O.L. 24

O.L. 25

T.R. Root
June, 1963